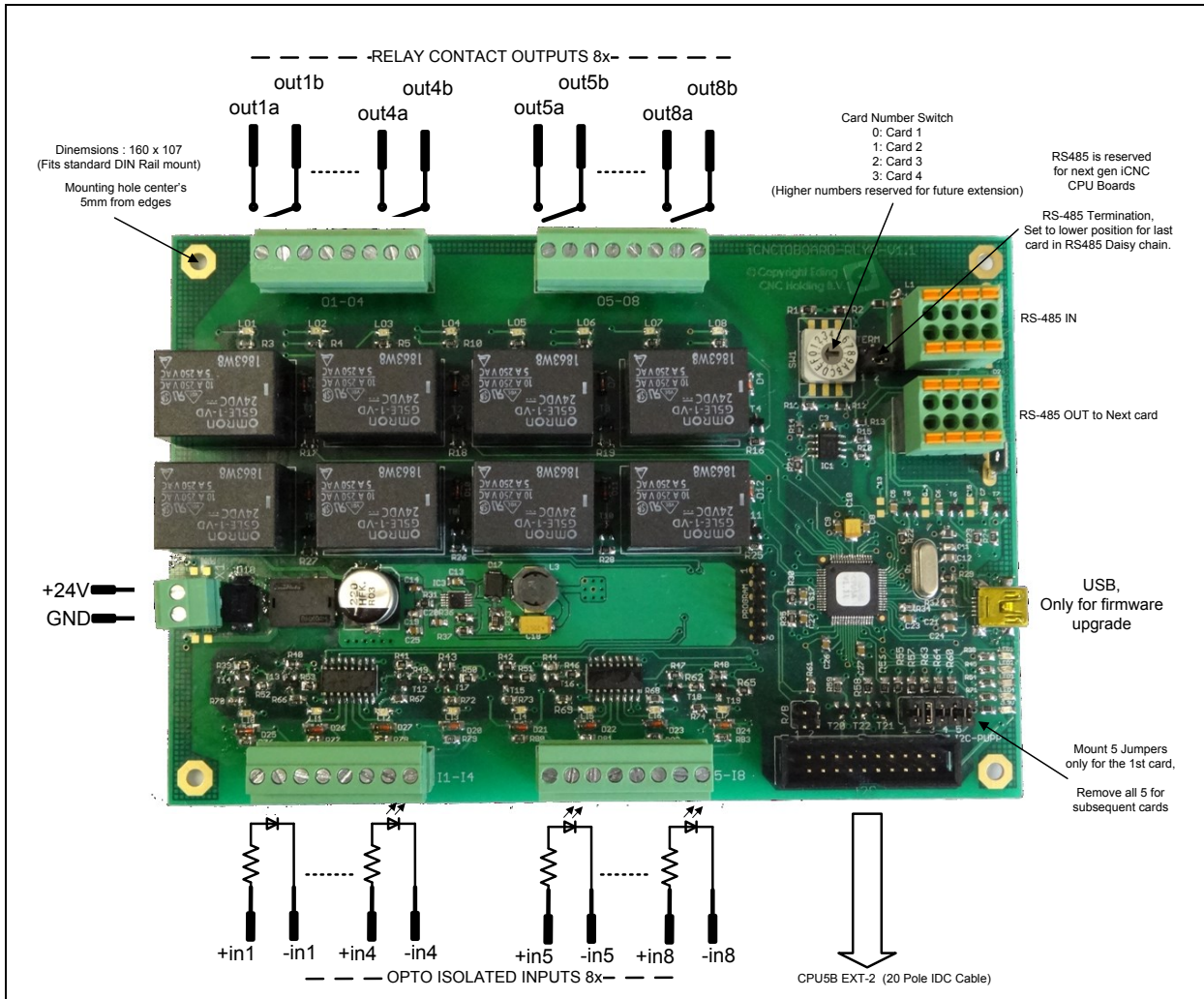


RLY8 GPIO BOARD V1.01



Features

- 4 boards can be simultaneously connected to CPU5B
- 64 additional IO for CPU5B.
- 107x160mm (Fits standard DIN rail mount)
- 8 optocoupler isolated inputs (work from 5-24V input voltage, 1 mA)
- 8 relays contact outputs
- Connection over I2C bus to CPU5B (EXT-2) connector.
- RS485 connection prepared for MODBUS with next gen CPU's
- 24V power supply, protected against reverse polarity.

Connector	Signal	Connector	Signal
I1 - I4 I5 - I8 Phoenix 3.8mm	+ 5..24V GND	O1 - O4 O5 - O8 Phoenix 3.8 mm	Relay contact, normally open.
24V PWR Phoenix 3.8mm	+24V power input, 300 mA.	X1	20 Pin flat cable connector for connection to CPU5B
Note that that USB is not used during operation. USB id for board firmware upgrade only.		Note that the board is prepared for Ethernet use. It is for future applications.	

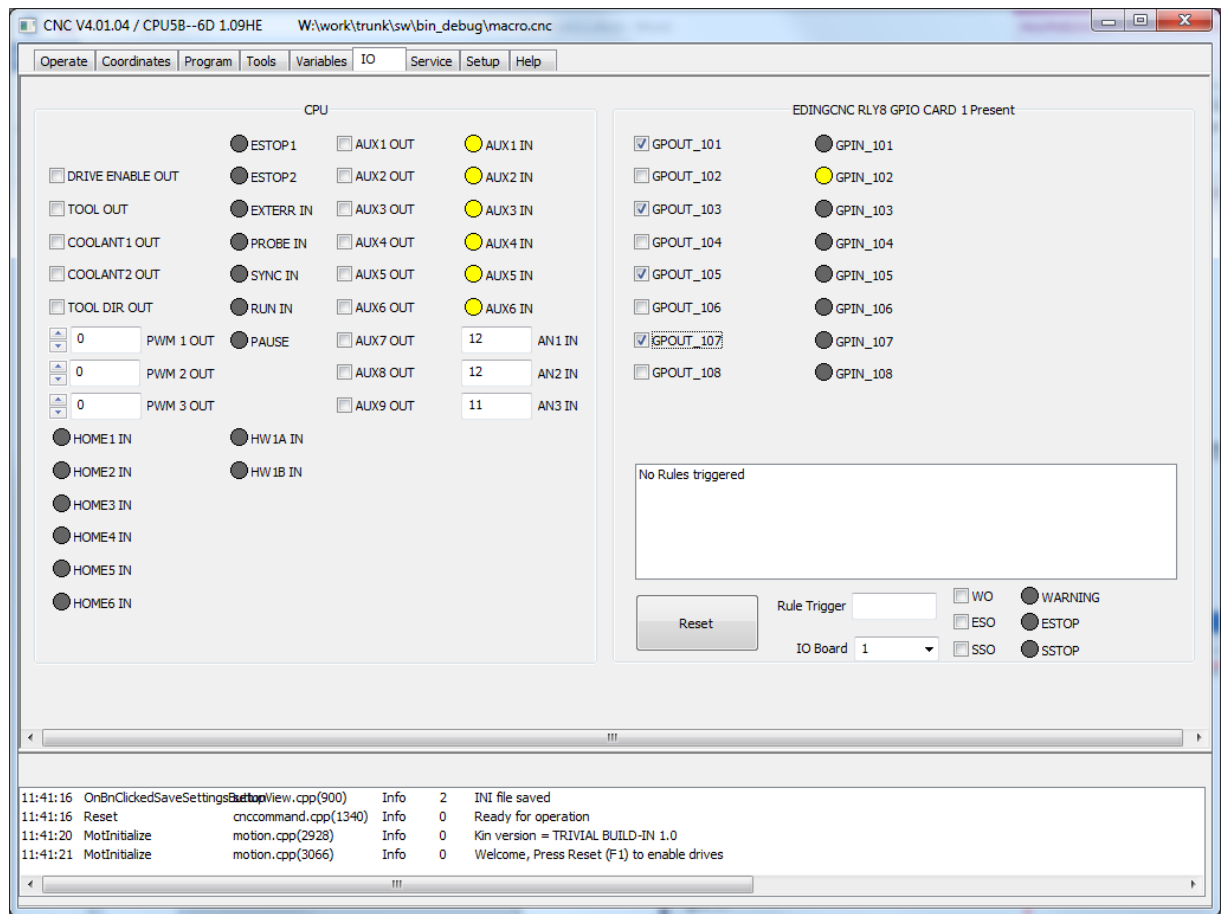
User interface

In MDI you can set the outputs using “M54 P101” and Reset with “M55 P101”.

101 means card 1, output 1.

Same way you can read the inputs with M56, see main software manual.

You can also interactive use the board in the IO screen of the software:



With the output checks you can set outputs.

The inputs are shown as LEDs.

Below the board can be selected 1-4.

The other things are for future use, not yet implemented.