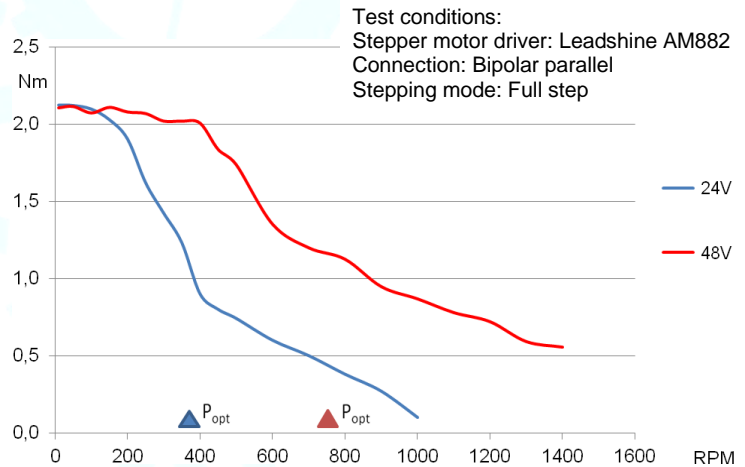
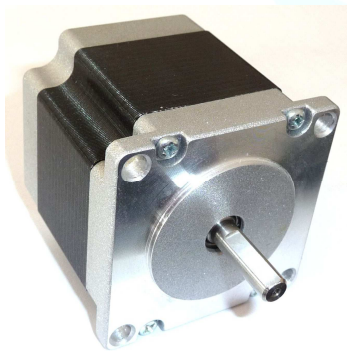
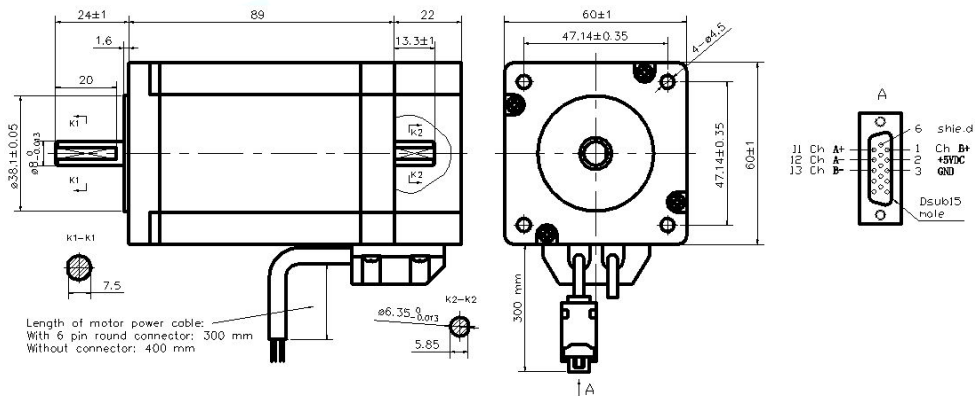


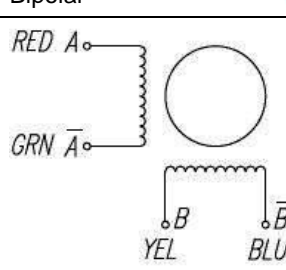
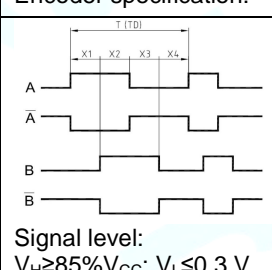
Hybrid Stepper Motor 60BYGH250D-09R enc1000

Motor with shielded cable, cable grommet and encoder. Optional: 6 pin round connector

Mechanical Dimensions:



Electrical Specifications:

Optional: 6 pin round connector	Bipolar	Encoder specification:	
Cable length 30 cm: Pin 1: A (RED) (A+*) Pin 2: A/ (GRN) (A-*) Pin 3: B/ (BLU) (B+*) Pin 4: B (YEL) (B-*) Cable length 500 mm: Pin 5: black wire 0.5 ² Pin 6: black wire 0.5 ² * = connection at Leadshine ES-D808 / 1008 drives, rotation CCW !			Encoder cable length 30 cm: Dsub15: Pin 1 : Channel B+ (EA+*) Pin 2 : VCC +5 V Pin 3 : Ground Pin 11: Channel A+ (EB+*) Pin 12: Channel A- (EB-*) Pin 13: Channel B- (EA-*) * = connection at Leadshine ES-D808 / 1008 drives!
Encoder lines per round		1000	
No. of phases	2		
Step Angle	1.8 ± 0.09°		
Rated Voltage (V)	3.07		
Current (A)	4.2		
Resistance (Ω)	0.73		
Inductance (mH)	3.3		
Holding Torque coils on DC (Nm)	3.3		
Holding Torque step mode (Nm)	2.3		
Rotor Inertia (gcm ²)		840	
Insulation Class		B	
Insulation Resistance		100MΩ, 500VDC	
Weight (kg)		1.7	